



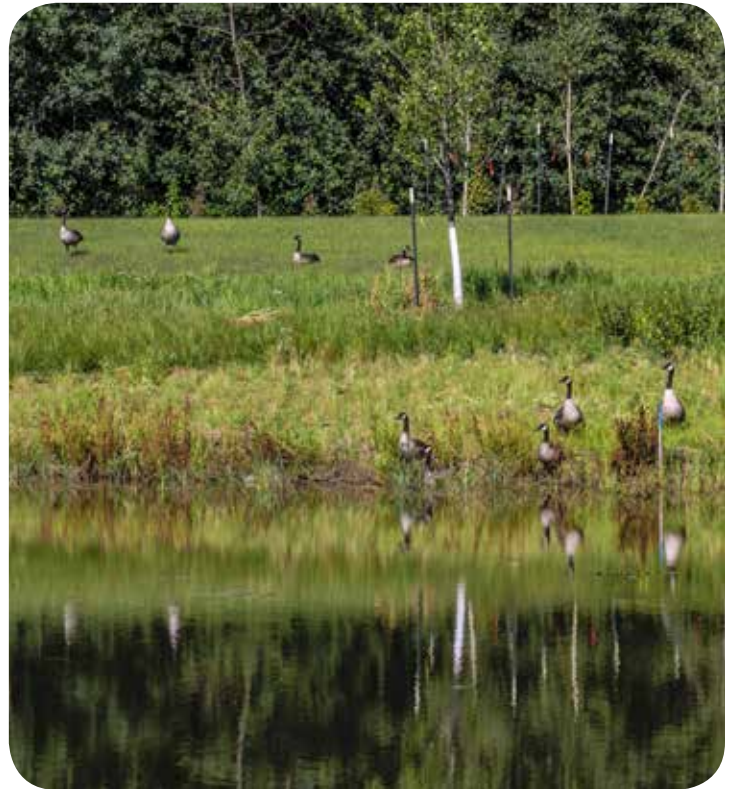
Starling
AT BIG LAKE

AT HOME WITH NATURE

Build your nest here.



Low Impact Developments
emphasize conservation and the use of on-site natural features to protect water quality and preserve the natural environment.



DID YOU KNOW?

In Starling at Big Lake more than 220 species of birds have been sighted within the Lois Hole Centennial Park, including the Starling, Franklin's Gull, Blake Tern, Eared Grebe, Northern Pintail, Yellowlegs, Dowitcher, Pectoral Sandpiper and America Avocet.

CREATING A SUSTAINABLE COMMUNITY

IN YOUR NEIGHBOURHOOD

Low Impact Development

Low Impact Development (LID) is a land planning and engineering design approach to managing stormwater runoff. LID emphasizes conservation and the use of on-site natural features like bioswales, rain gardens and wetlands to protect water quality.

Water Cleansing

In natural, undeveloped areas, the water from rain and snow melt is first absorbed into the soil, collected in wetlands, and used by the vegetation growing on the land. What isn't used this way is called runoff. This runoff moves across the land and into creeks, streams and rivers. The water quality of the runoff is improved by the absorption in the soil and by the uptake by vegetation, particularly in wetlands or areas of high moisture like a ditch or swale. The water is cleaned by these processes.

Bioswales

Bioswales are landscape elements that are designed to remove pollution and silt from surface runoff water with drainage courses that are filled with vegetation and riprap.

Natural Wildlife

Big Lake is globally recognized as an important bird area because it supports large nesting grounds and many migrating waterfowl and shorebirds. LID provides many benefits such as creating a natural habitat for our feathered and furry friends!

LED Lighting

Light Emitting Diode (LED) lighting system reduces light pollution by having more directed light patterns.

FOR YOUR HOME

Buy a Rain Barrel

You can implement a Low Impact Development (LID) in your yard by simply installing a rain barrel to collect rain water for watering your plants and lawn!

Increase your topsoil

By increasing the depth of topsoil on your lot you create a sponge that locks in moisture for your lawn, trees and shrubs to use.

Disconnect downspouts

Disconnect and aim your gutter drains into a vegetated areas such as your lawn instead of impermeable surfaces such as driveways and sidewalks.

Install a bird feeder

Enjoy the company of your wild neighbours by installing a bird feeder. Feeders are helpful when the birds require the most energy such as late winter and early spring.

LED Lighting

Using LED lights in your home consumes less energy, thus saves you money and has a lower impact on the environment.



Starling

AT BIG LAKE

starlingatbiglake.com

